



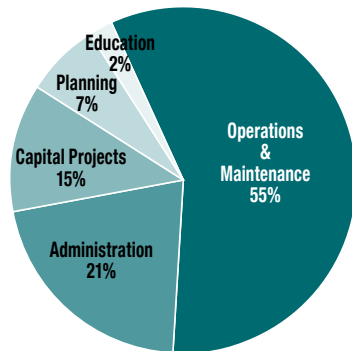
City crews clean storm drainage lines to keep them flowing freely

## Stormwater Fees

All developed properties in Eugene pay stormwater fees that support the operation, maintenance and restoration of the city's stormwater system. The stormwater system includes pipes, catch basins, manholes, drywells, water quality facilities, wetlands, waterways and roadside ditches that receive and transport stormwater runoff to local area waterways including Amazon Creek and the Willamette River, and in some cases infiltrate runoff into the soil. Services funded by the stormwater fees include flood control and drainage, water quality protection and restoration, and the protection and improvement of wetlands and waterways for their stormwater benefits.

Beginning in July, 2011, stormwater rates will increase by 11%, or \$1.07 per month for the majority of residential customers. Other user categories will see an increase of .41 per thousand square feet of impervious area. This increase is needed in order to sustain current services and to fulfill a new DEQ permit which requires the city to replace most or all of its public drywells to protect potential drinking water sources.

### Use of Stormwater Fees



## Stormwater Monthly Fee Schedule (effective July 2011)

Fees for residential stormwater customers are based on the size of the building footprint.

The footprint is the combined square footage of the garage/carport and the first floor of the house.

User Category <sup>1</sup>	Small Residential <sup>2</sup>	Medium Residential <sup>3</sup>	Large Residential <sup>4</sup>	General Customers <sup>5</sup> Commercial/Industrial
<b>Rate Component</b>				
<b>Impervious Surface</b>	\$5.53	\$8.90	\$3.07 per 1,000 sf	\$3.07 per 1,000 sf
<b>Street-Related</b>	\$1.53	\$1.53	\$1.53	\$1.08 per 1,000 sf
<b>Administrative (per account)</b>	\$0.46	\$0.46	\$1.43	\$1.43
<b>Total Monthly Fee</b>	\$7.52	\$10.89	Varies	Varies

<sup>1</sup> Duplex rates are modified, based on the building footprint and building configuration

<sup>2</sup> Building footprint is equal to or less than 1,000 square feet.

<sup>3</sup> Building footprint is greater than 1,000 square feet and less than 3,000 square feet.

<sup>4</sup> Building footprint is 3,000 square feet or greater

<sup>5</sup> All users other than single family homes and duplexes are considered General Customers

## Total Stormwater Budget = \$15,317,703 (FY12)

### Stormwater fees are used to:

- Maintain and rehabilitate more than 570 miles of stormwater pipes and waterways
- Clean over 14,700 catch basins and curb inlets
- Collect and recycle over 18,000 cubic yards of leaves per year
- Eliminate illegal connections and discharges
- Sweep more than 36,000 curb miles of streets each year
- Provide stormwater education to 3,000 students each year
- Protect, restore and maintain wetlands and waterways
- Enhance the quality of stormwater runoff from developed areas by constructing capital restoration projects
- Replace public drywells to protect groundwater quality
- Administer stormwater regulations related to certain industries, all construction activities and most new residential, commercial and industrial development
- Preserve and maintain street trees and median vegetation
- Monitor water quality in our local waterways through sampling and data analysis



**Stormwater** from rain and runoff flows directly from storm drains to waterways (creeks, rivers).

**It is not treated.**

### City Fees on EWEB Bill

The City of Eugene adopts and administers the stormwater and wastewater service fees. EWEB has no relationship with the City's wastewater or stormwater system operation or rates and acts only as the City's billing agent.



### For more information:

#### Stormwater and Wastewater Fees:

Public Works Administration  
Utility Customer Service Office, 541-682-4900

#### Stormwater Programs and Services:

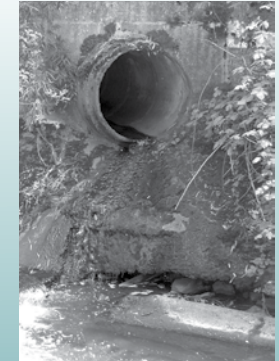
Stormwater Public Education and Outreach, 541-682-2739  
Stormwater Maintenance Services, 541-682-4800

#### Wastewater Services and Programs:

Local Wastewater/Stormwater Systems  
Public Works Maintenance, 541-682-4800  
Regional Wastewater System and Treatment  
Public Works Wastewater, 541-682-8600

Printed on recycled paper

## City of Eugene User Fees



# Stormwater Wastewater



July 2011



**City of Eugene Public Works**

101 E Broadway, Suite 400  
Eugene OR 97401  
www.eugene-or.gov

## Wastewater fees

All properties connected to the public wastewater system pay wastewater fees. Eugene provides local wastewater collection services, and the Metropolitan Wastewater Management Commission (MWWC) operates the regional wastewater collection and treatment facilities. The MWWC approved a 4% increase in regional rates, and the City Manager approved a 3% increase in local rates, effective on bills issued on and after July 1, 2011. For a typical residential customer, this equates to a monthly increase of about \$1.11.

The purpose of the regional wastewater program is to protect public health and safety and the environment by providing high-quality wastewater management services to the Eugene-Springfield metropolitan area. MWWC's regional wastewater rate increase is necessary to fund operation and maintenance of the existing wastewater treatment facilities and implement planned capital improvement projects. The regional wastewater facilities were designed in the late 1970s to serve the community for 20 years. In 2004, the MWWC adopted a Facilities Plan that identifies cost-effective solutions for the region's wastewater needs projected through 2025. The MWWC is investing in significant improvements to provide capacity for community growth, avoid raw sewage overflows caused by rainy weather, and meet new, more stringent regulatory requirements to protect the Willamette River. Both user fees and systems development charges will provide resources to support these investments.

The regional wastewater program is complemented by local collection systems and pump stations maintained by the cities of Eugene and Springfield. The increase in Eugene's local wastewater user fees is necessary to maintain current operating service levels while also funding necessary capital improvements. Both cities are committed to funding capital improvements which will reduce the amount of stormwater entering the collection system during peak wet weather periods.

Wastewater service fees are billed to all users connected to the Eugene/Springfield wastewater collection and treatment facilities (Eugene Code 6.401-6.471). Customers pay a combined fee which includes:

- A basic MWWC (regional) charge of \$10.90 per month (reflects the 4% increase noted above);
- A flow-based fee, calculated on the amount of water used and customer category. The flow-based fee is the combination of City of Eugene and MWWC (regional) wastewater service rates per 1,000 gallons (1 kgal) of water used. Customer categories are based upon the strength and characteristics of wastewater discharged to the public sewer system.

### Wastewater Bills Vary Summer to Winter

Eugene uses a flow-based averaging procedure that acknowledges that some of the water used during summer months (May – November) may not enter the wastewater system. Wastewater charges for these months are based on the previous winter's average monthly use or on the actual water used, whichever is less. Wastewater charges on bills issued during the winter months (December - April) are based on actual water meter readings.

### How Wastewater Fees are Used

Local and regional wastewater fees pay for the collection and conveyance of wastewater and for the operation and maintenance of the regional wastewater treatment facilities. Services

- Maintain more than 800 miles of wastewater lines
- Operate and maintain 30 pump stations (26 local, 4 regional)
- Inspect/clean almost 390 miles of wastewater lines per year
- Invest in capital improvements
- Treat 13.6 billion gallons of wastewater per year
- Conduct over 25,000 water quality tests
- Process 4,800 dry tons of biosolids per year



Residual waste is stored and converted to beneficial biosolids

### Wastewater Flow-Based Fee (per 1,000 gallons)

Service Category	Residential Customer	Commercial/Industrial Customers				
		Low Strength 400*	Medium Strength 800*	High Strength 1,200*	Very High Strength 1,600*	Super High Strength over 1,600*
MWWC (regional)	\$2.168	\$2.916	\$4.249	\$6.027	\$7.811	\$9.592
City of Eugene (local)	\$1.904	\$1.904	\$1.904	\$1.904	\$1.904	\$1.904
<b>Total</b>	<b>\$4.072</b>	<b>\$4.820</b>	<b>\$6.153</b>	<b>\$7.931</b>	<b>\$9.715</b>	<b>\$11.496</b>

\*Combined biochemical oxygen demand and suspended solids in milligrams per liter (mg/L)



Capital improvements provide capacity for community growth

### Typical Residential Monthly Bill

(assumes 5,000 gallons monthly usage)

Basic Charge (MWWC): \$10.90  
 Flow-Based Fee (MWWC): \$10.84 (\$2.168 x 5 kgal)  
**Total Regional Fee: \$21.74**

Flow-Based Fee (City): \$9.52 (\$1.904 x 5 kgal)

**Total Monthly Fee: \$31.26**

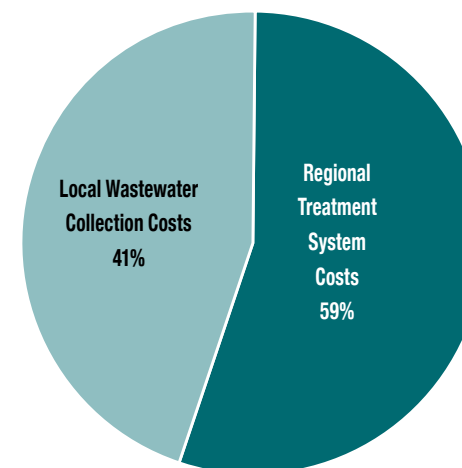


**Wastewater** from building plumbing (laundry, sink, toilet, bath) **must be treated** before it is discharged to waterways.



Dried biosolids are prepared for field application

### Use of Wastewater Fees



**Total Local and Regional Wastewater Proposed Budget = \$23,458,163 (FY12)**